



# Townhome Collection | F2

BEDROOMS

2 + Tech Centre + Den/Flex

BATHROOMS

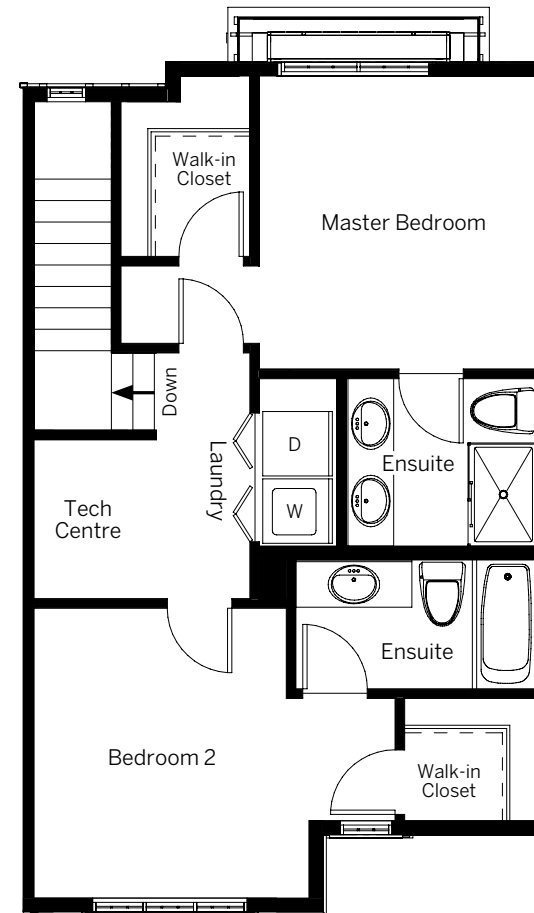
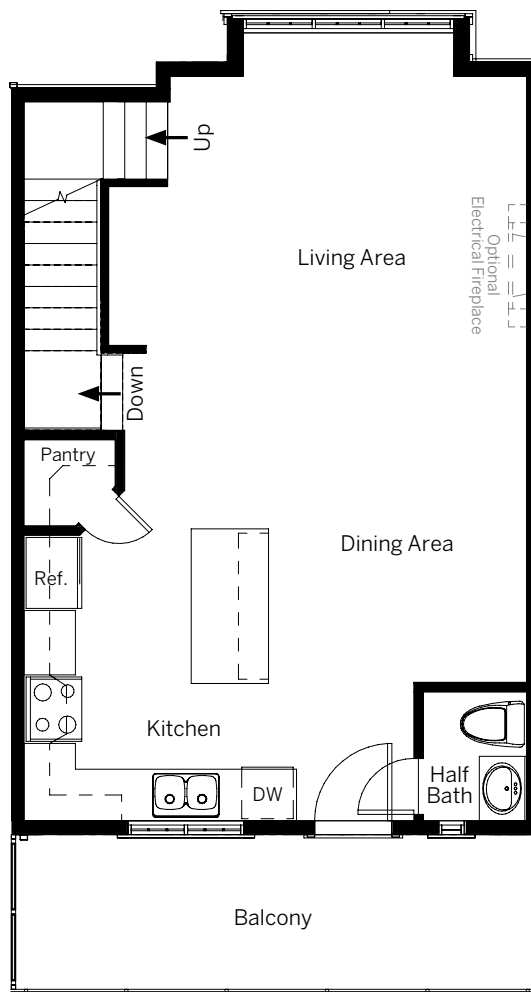
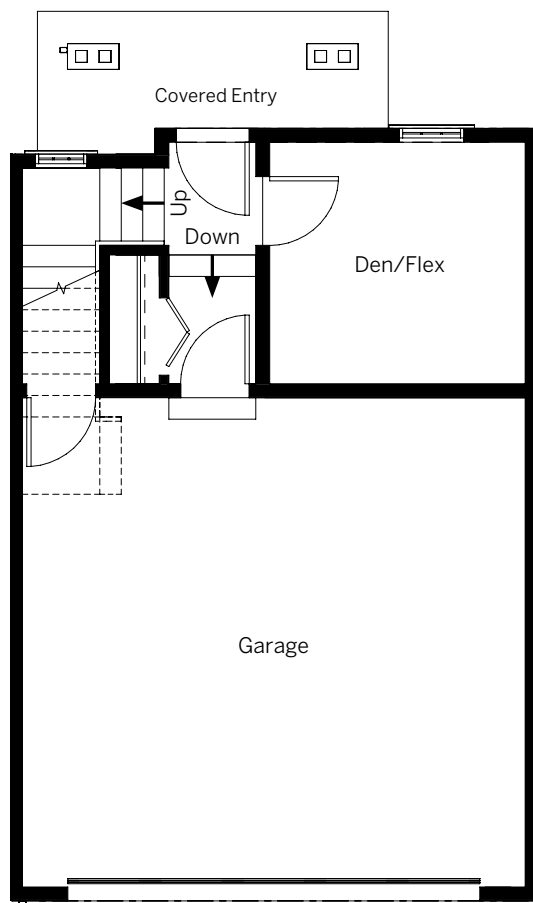
2.5

FINISHED SIZE

1461



Mariner



The developer/builder reserves the right to make modifications or substitutions should they be necessary. Any measurements provided are approximate only. Renderings shown (interior and exterior) are for general illustration purposes only, and should not be relied upon to accurately represent the actual final product. This is currently not an offering for sale. Any such offering can only be made by way of a disclosure statement. The developer/builder reserves the right to make modifications to building design, specifications, features, plans, options, materials and drawings before or after a disclosure statement is filed. E.&O.E. 05/23/17.

GableCraft.ca/RoyalBay





# Townhome Collection | F2

BEDROOMS

2 + Tech Centre + Den/Flex

BATHROOMS

2.5

FINISHED SIZE

1461

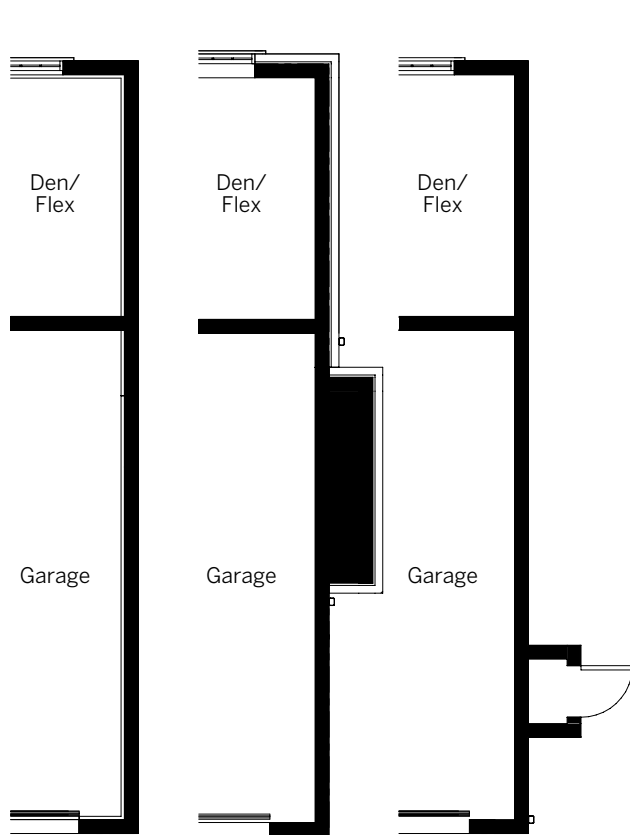


Mariner

## GROUND LEVEL CORNER CONDITIONS

## MAIN LEVEL CORNER CONDITIONS

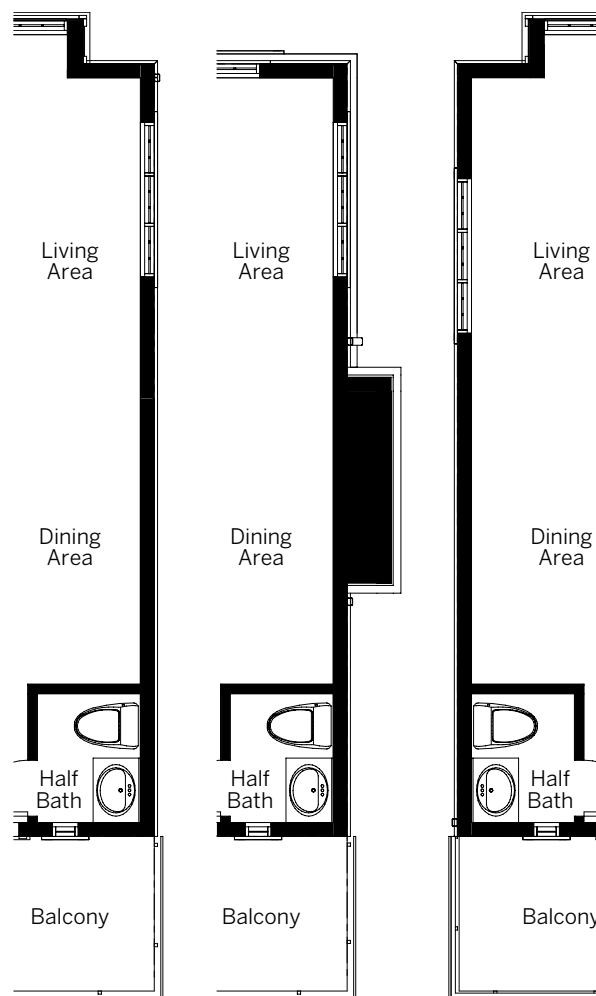
## UPPER LEVEL CORNER CONDITIONS



Unit 4 + 9

Unit 15 + 30

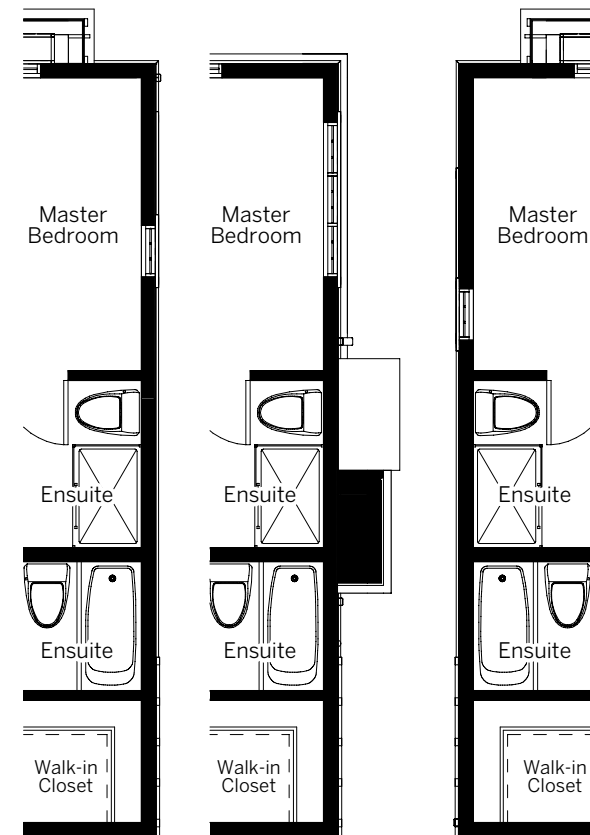
Unit 20 + 24



Unit 4 + 9

Unit 15 + 30

Unit 20 + 24



Unit 4 + 9

Unit 15 + 30

Unit 20 + 24

The developer/builder reserves the right to make modifications or substitutions should they be necessary. Any measurements provided are approximate only. Renderings shown (interior and exterior) are for general illustration purposes only, and should not be relied upon to accurately represent the actual final product. This is currently not an offering for sale. Any such offering can only be made by way of a disclosure statement. The developer/builder reserves the right to make modifications to building design, specifications, features, plans, options, materials and drawings before or after a disclosure statement is filed. E.&O.E. 05/23/17.

GableCraft.ca/RoyalBay

