



# Townhome Collection | F3

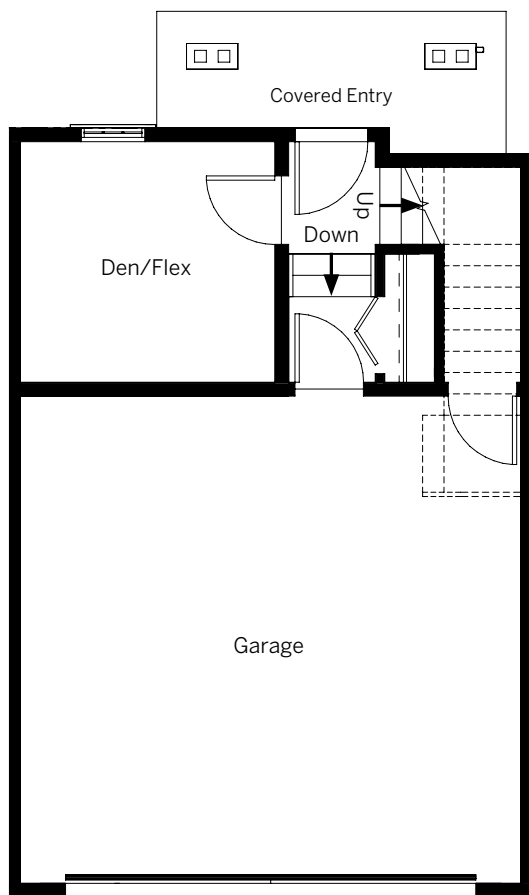
BEDROOMS  
3 + Den/Flex

BATHROOMS  
2.5

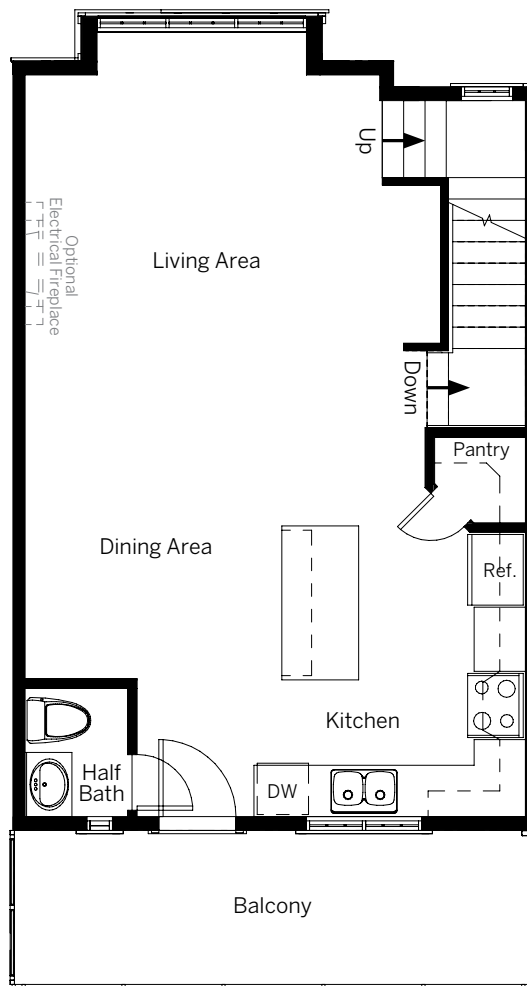
FINISHED SIZE  
1461



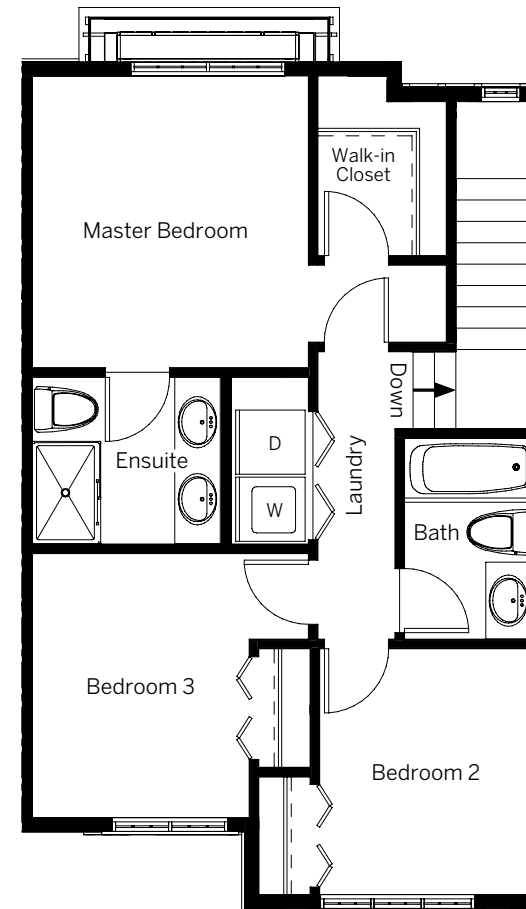
Mariner



**GROUND LEVEL**



**MAIN LEVEL**



**UPPER LEVEL**

The developer/builder reserves the right to make modifications or substitutions should they be necessary. Any measurements provided are approximate only. Renderings shown (interior and exterior) are for general illustration purposes only, and should not be relied upon to accurately represent the actual final product. This is currently not an offering for sale. Any such offering can only be made by way of a disclosure statement. The developer/builder reserves the right to make modifications to building design, specifications, features, plans, options, materials and drawings before or after a disclosure statement is filed. E.&O.E. 05/23/17.

GableCraft.ca/RoyalBay





# Townhome Collection | F3

BEDROOMS  
3 + Den/Flex

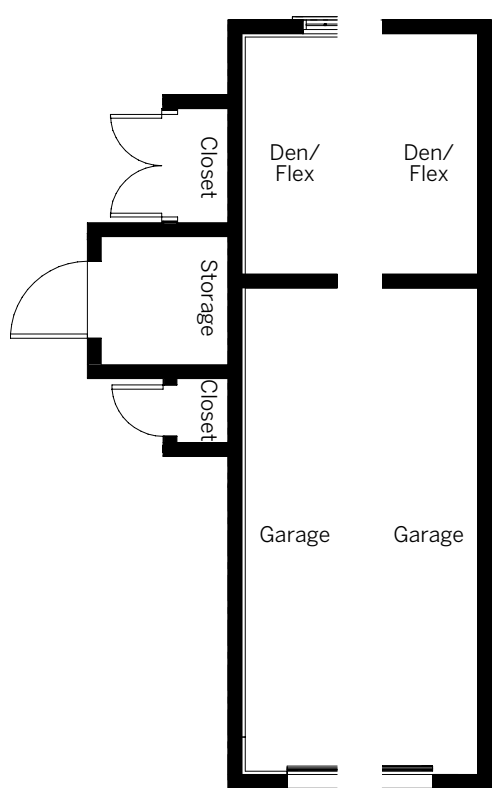
BATHROOMS  
2.5

FINISHED SIZE  
1461



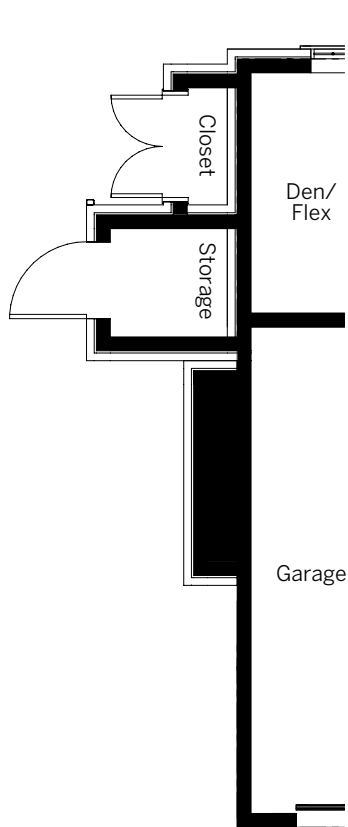
Mariner

## GROUND LEVEL CORNER CONDITIONS

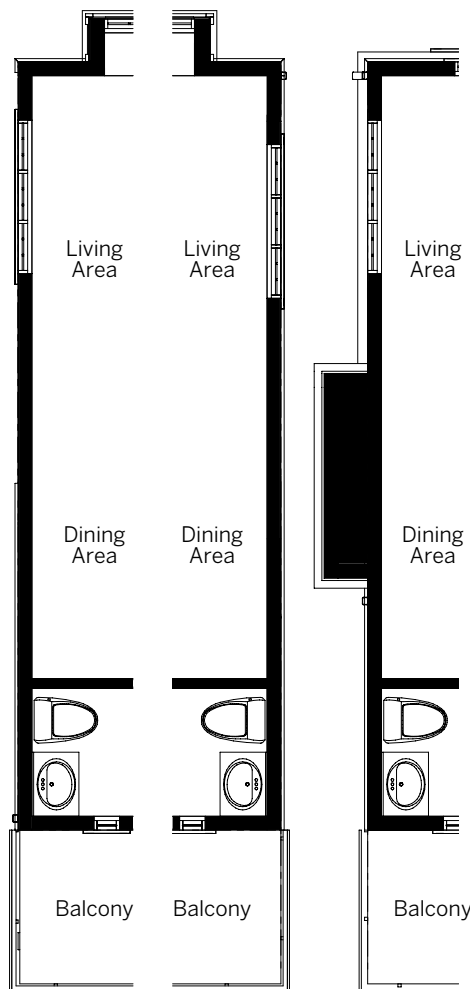


Unit 1      Unit 12, 17 + 17

## MAIN LEVEL CORNER CONDITIONS

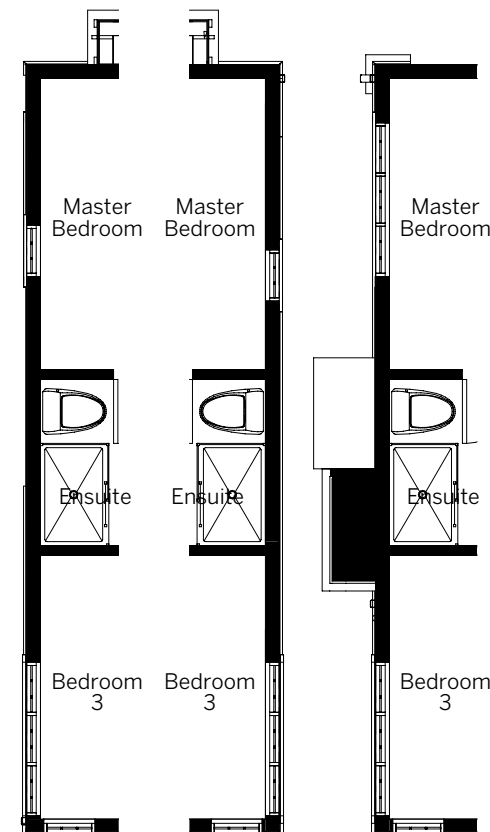


Unit 16 + 29



Unit 1      Unit 12, 17 + 21      Unit 16 + 29

## UPPER LEVEL CORNER CONDITIONS



Unit 1      Unit 12, 17 + 21      Unit 16 + 29

The developer/builder reserves the right to make modifications or substitutions should they be necessary. Any measurements provided are approximate only. Renderings shown (interior and exterior) are for general illustration purposes only, and should not be relied upon to accurately represent the actual final product. This is currently not an offering for sale. Any such offering can only be made by way of a disclosure statement. The developer/builder reserves the right to make modifications to building design, specifications, features, plans, options, materials and drawings before or after a disclosure statement is filed. E.&O.E. 05/23/17.

