



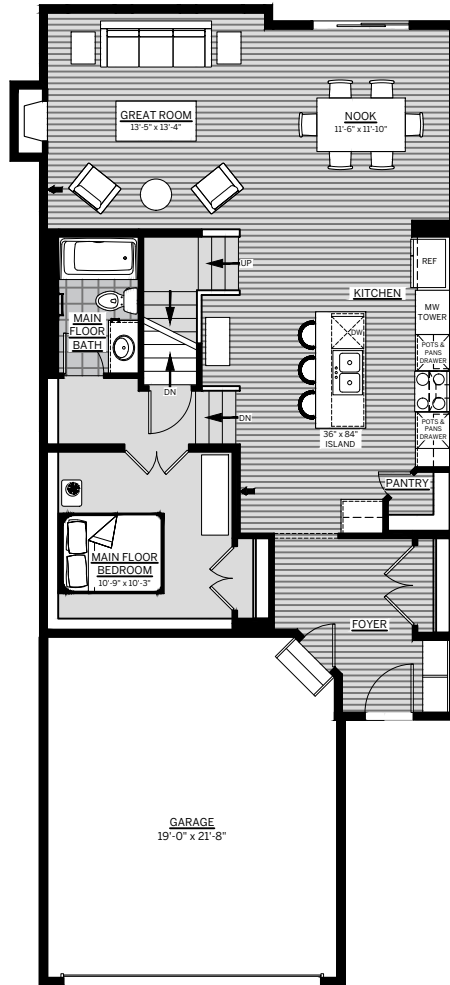
SHEFFIELD

FRINT DRIVE HOME

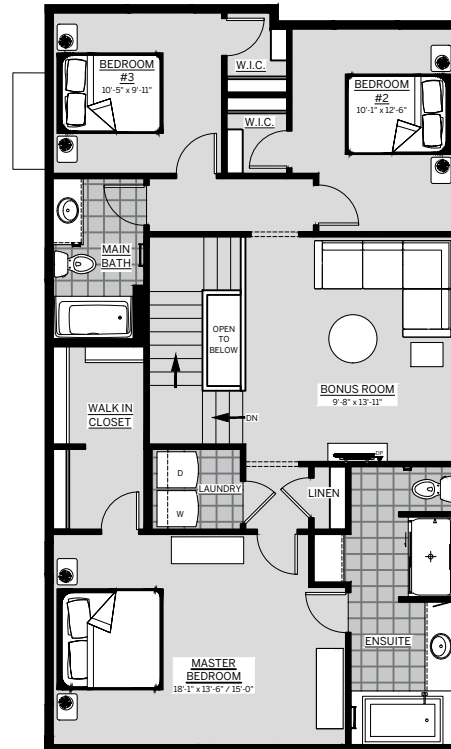
BEDROOMS 3	BATHROOMS 2.5	FINISHED SIZE 2272	UNDEVELOPED SIZE 969
---------------	------------------	-----------------------	-------------------------



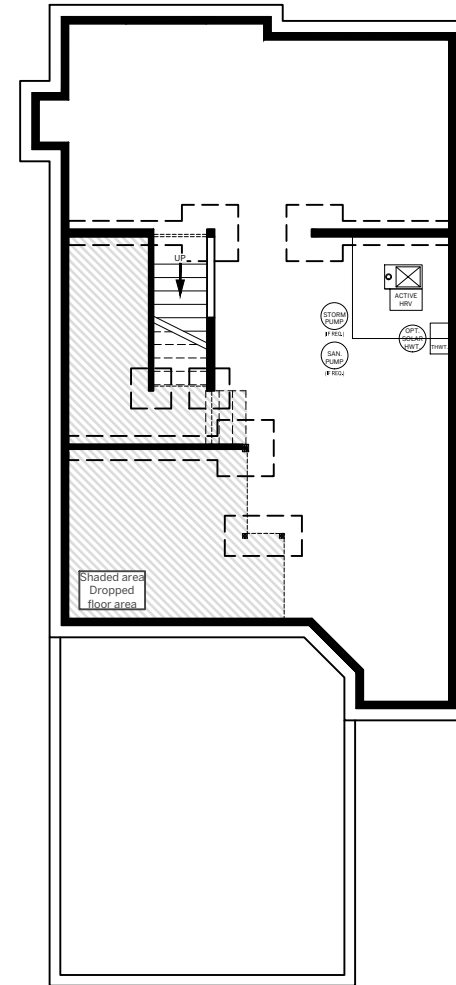
**GABLEcraft
HOMES™**



MAIN FLOOR 1063 sq.ft.



SECOND FLOOR 1209 sq. ft.



UNDEVELOPED BASEMENT 969 sq. ft.

The developer / builder reserves the right to make modifications or substitutions should they be necessary. Any measurements provided are approximate only. Renderings shown (interior and exterior) are for general illustration purposes only, and should not be relied upon to accurately represent the actual final product. This is currently not an offering for sale. Any such offering can only be made by way of a disclosure statement. The developer / builder reserves the right to make modifications to building design, specifications, features, plans, options, materials and drawings before or after a disclosure statement is filed. E.&O.E.

27/07/20

gablecrafthomes.ca/royalbay