

# ABERDEEN

## DRIVE UNDER HOME

BEDROOMS 3 | BATHROOMS 3

Schedule "X" - Lot 75 / Sector 4B, 3342 Sandpiper Street

### Included Options

- M1** Kitchen Level 2 #21010
  - 42" upper cabinets with crown moulding extended to ceiling throughout kitchen
  - Larger kitchen island with wine rack, open shelves and additional storage
  - Pull-out recycle drawer
  - Under-cabinet lighting
- M2** Bank of Drawers to Main Floor Bath #21070
- M3** Great Room Potlights #50010
  - LED potlights replace existing ceiling fixture and include dimmer switch
- M4** Flex Room Potlights #50015
  - LED potlights replace existing ceiling fixture and include dimmer switch
- M5** Long Run Conduit #51140
- M6** Gas Line for BBQ #83020
- M7** Window Blind Package #94010
  - 2 inch white faux wood blinds to all main and second floor windows
  - Excludes any exterior doors, sidelights, and sliding glass doors
- M8** Level 2 Fireplace #60001
  - Paint Grade Mantel
- S1** Ensuite Level 2 #23050
  - Additional sink to vanity with light fixture above
  - Bank of drawers added to vanity
  - Door to Water Closet
  - Shower with acrylic base and tiled shower walls extending to ceiling
  - Frameless glass swing shower door
  - Tub upgraded to 72 inch x 36 inch drop-in soaker
- S2** Laundry Level 2 #23050
  - Laminate countertop above washer and dryer with wire shelf above
  - 6 inch tile backsplash above countertop
- S3** Bank of Drawers to Main Bath #23015
- R1** Railing Level 2 - Painted #55060
  - Railing leading to main floor floor and main floor flat railing
- B1** Insulated Concrete Form Basement
- B2** Heat Pump Rough In #70010
- B3** Bathroom Rough-In for Unfinished Basement #83010
  - Drain and venting pipes
  - Vent in exterior wall for future bath fan connection
  - Does not include waterlines to future bathroom location
- E1** Rear Yard Custom Deck
  - Pressure treated wood deck with aluminum railing to grade
  - Gravel and edging matching deck footprint below

Job Number: 44-04-02-075

Initial(s): \_\_\_\_\_



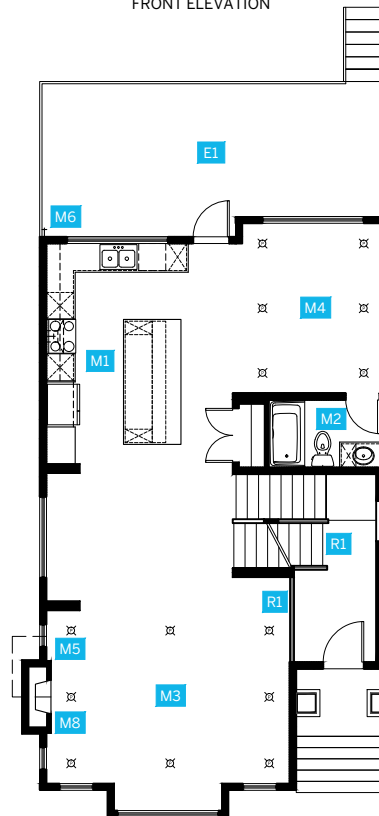
FRONT ELEVATION



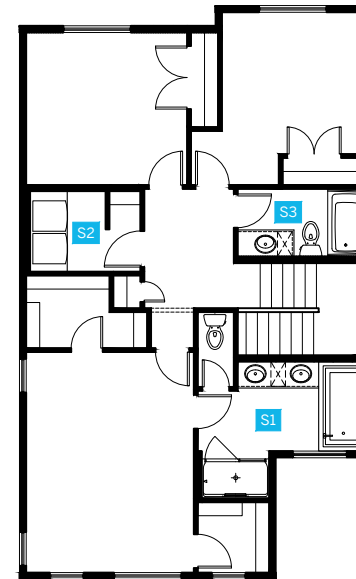
REAR ELEVATION

### Elevation A - 2148 sq. ft.

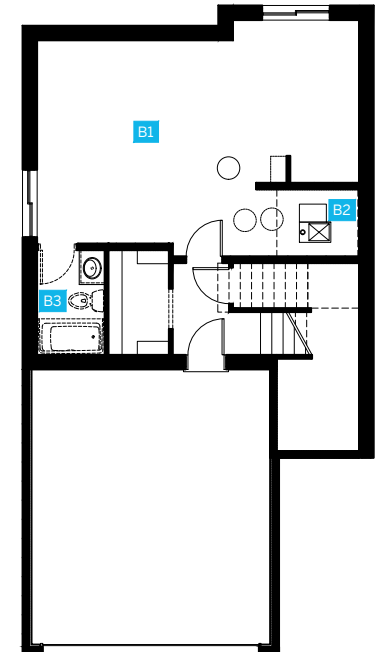
Main Floor Area = 1038 sq. ft.  
 Second Floor Area = 1020 sq. ft.  
 Finished Basement = 90 sq. ft.  
 Unfinished Area = 582 sq. ft.



MAIN FLOOR WINDOW LAYOUT



SECOND FLOOR WINDOW LAYOUT



BASEMENT WINDOW LAYOUT

**GABLEcraft**  
**HOMES™**



**SCHEDULE "X"**

This floor plan represents one version of this home and all measurements provided are approximate only. The square footage, measurements and layout may vary based on the elevation and/or lot. Renderings shown (interior and exterior) are for illustration purposes only and should not be relied upon to accurately represent the actual final product. The Developer/Builder reserves the right to make modifications or substitutions should they be necessary. All plans, options, dimensions, specifications, materials and drawings are subject to change without notice before or after a disclosure statement is filed. Any such offering may and/or may not be made by way of a disclosure statement. E&O.E.

Initials