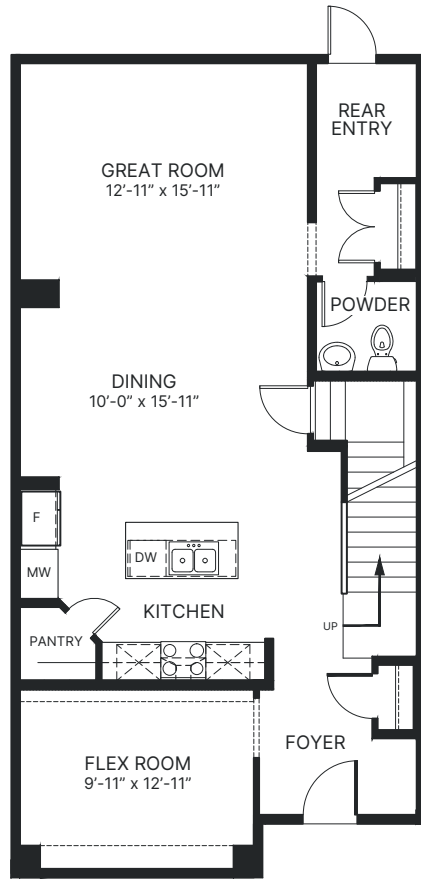
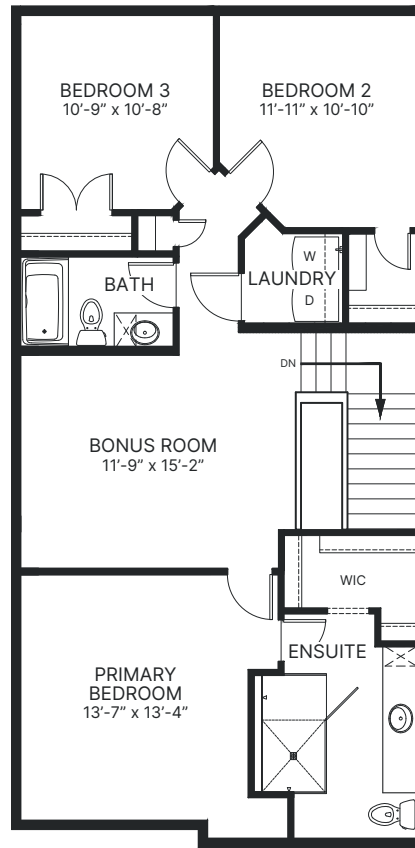


Westwick

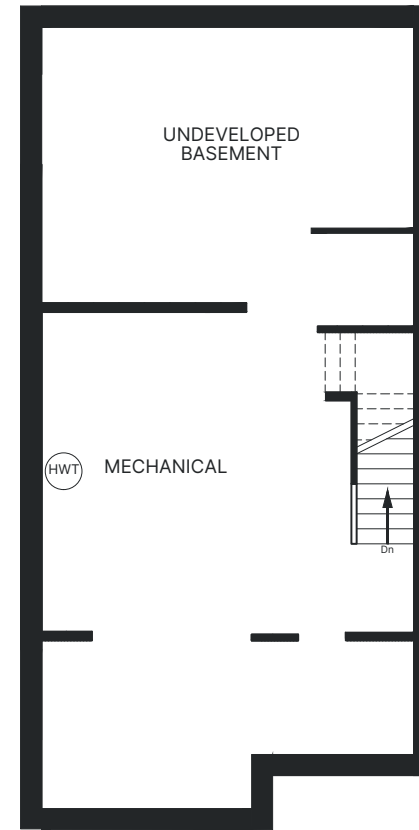
3 Bed + 2.5 Bath | 2,102 sq. ft



MAIN FLOOR: 1,025 sq. ft.



SECOND FLOOR: 1,077 sq. ft.



UNFINISHED BASEMENT: 935 sq. ft.

Dimensions and square footage shown may vary. Gablecraft Homes reserves the right to modify design and specifications without notice. For additional information, please consult with a sales representative. E&O.E.

GABLEcraft HOMES