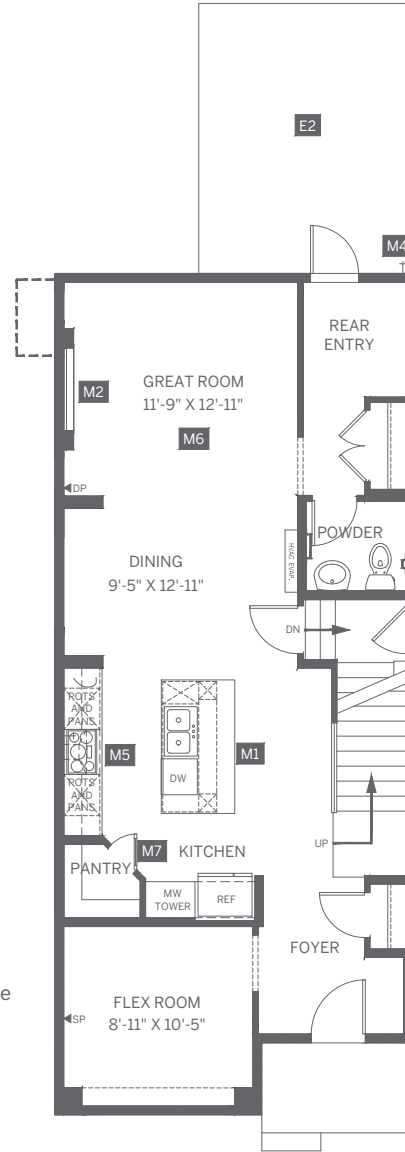


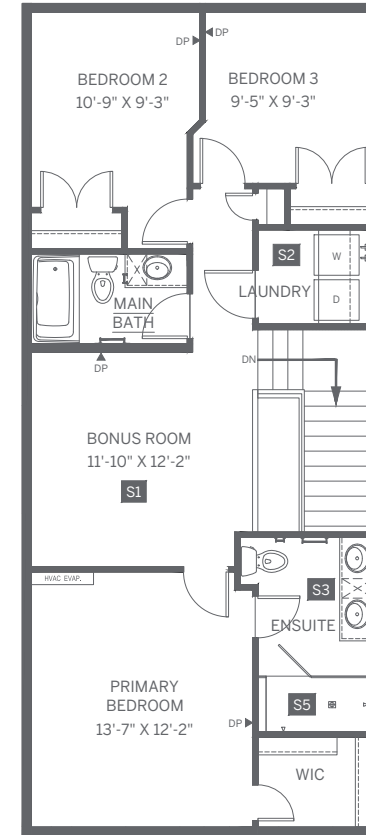


INCLUDED OPTIONS

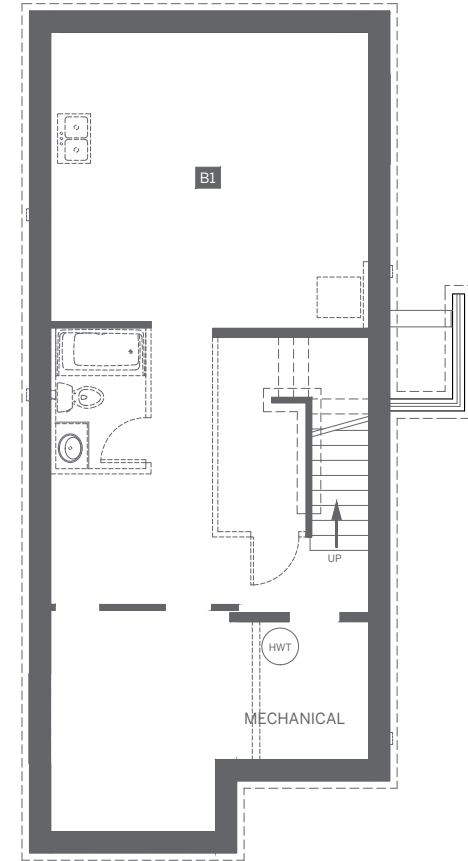
- E1** Concrete Double Parking Pad
- E2** Rear Yard Option 2
 - Poured concrete patio & pressure treated steps where required
 - (Lot Type = Split Drainage, Front to Back, Back to Front)
 - Important Notes:
 - #1 - Patio Height and stairs to yard may vary based on site conditions. Maximum 2 stairs
- M1** Chefs Kitchen
 - Stacked upper cabinets (12 inch over 36 inch) with cabinet riser extending to ceiling throughout kitchen
 - Larger kitchen island with wine rack, open shelves and additional storage
 - Gas Cooktop
 - Additional pots and pans drawers below cooktop
 - Pull-out recycle drawer
 - Under-cabinet lighting
 - Pot Filler
 - Built-in microwave and wall oven in cabinet tower with trim kit
- M2** Great Room Full Height Electric Fireplace
- M3** Gas Line to House
- M4** Gas Line for BBQ
- M5** Gas Line for Range
- M6** Great Room Potlights
- M7** French Door Pantry
- M8** Sleeve for Future Rear Yard Irrigation
- R1** Railing Upgrade 1
 - Railing added to main floor leading to second floor
- S1** Bonus Room Potlights
- S2** Countertop to Laundry
 - Laminate countertop above washer and dryer with wire shelf above
- S3** Double Sink to Ensuite
- S4** Re-Circulating Pump and Line to Ensuite Shower
- S5** Wall Rainhead and Hand Shower on Slide Bar to Ensuite
- B1** Basement Suite Rough-in
 - Concrete stairwell with 36 inch entry door
 - Rough-in plumbing for sinks, toilet, tub, and laundry
 - Electrical supplied to sub-panel for future connection
 - Additional required parking stall in tandem on driveway. Additional parking options available
 - Ceiling heights will vary due to on-site conditions



MAIN FLOOR: 901 sq. ft.



SECOND FLOOR: 908 sq. ft.



UNFINISHED BASEMENT: 814 sq. ft.