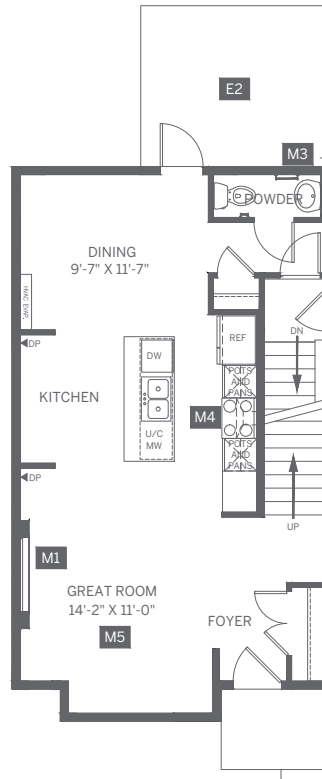


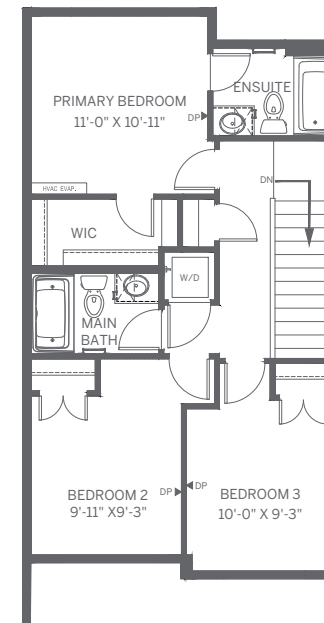


INCLUDED OPTIONS

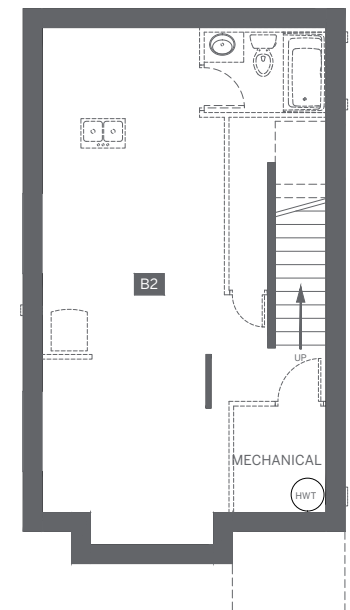
- E1** Concrete Double Parking Pad
- E2** Rear Yard Option 2
 - Poured concrete patio & pressure treated steps where required
 - (Lot Type = Split Drainage, Front to Back, Back to Front)
 - Important Notes:
 - #1 - Patio Height and stairs to yard may vary based on site conditions. Maximum 2 stairs
- M1** Great Room Full Height Electric Fireplace
- M2** Gas Line to House
- M3** Gas Line for BBQ
- M4** Gas Line for Range
- M5** Great Room Potlights
- S1** Re-Circulating Pump and Line to Ensuite Shower
- B1** Sleeve for Future Rear Yard Irrigation
- B2** Basement Suite Rough-in
 - Concrete stairwell with 36 inch entry door
 - Rough-in plumbing for sinks, toilet, tub, and laundry
 - Electrical supplied to sub-panel for future connection
 - Additional required parking stall in tandem on driveway. Additional parking options available
 - Ceiling heights will vary due to on-site conditions



MAIN FLOOR: 670 sq. ft.



SECOND FLOOR: 684 sq. ft.



UNFINISHED BASEMENT: 599 sq. ft.