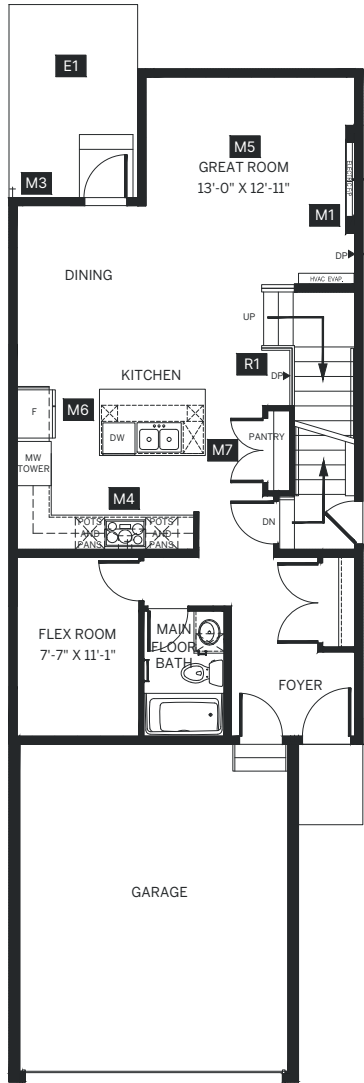


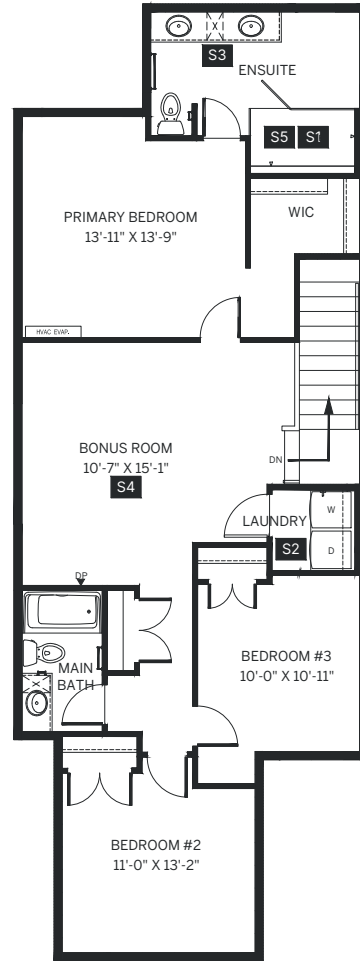


Yorkshire

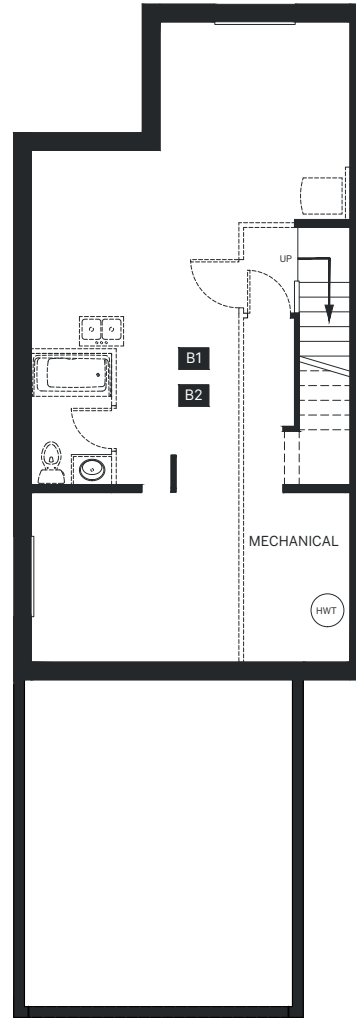
3587 Westerly Place | Lot 42



MAIN FLOOR
860 SQ. FT.



SECOND FLOOR
1141 SQ. FT.



UNFINISHED BASEMENT
776 SQ. FT.

Included Options

- E1** *Rear Yard Option 2*
 - Poured concrete patio & pressure treated steps where required
 - (Lot Type = Split Drainage, Front to Back, Back to Front)
 - Important Notes:
 - Patio Height and stairs to yard may vary based on site conditions. Maximum 2 stairs
- M1** *Great Room Full Height Electric Fireplace*
- M2** *Gas Line to House*
- M3** *Gas Line for BBQ*
- M4** *Gas Line for Range*
- M5** *Great Room Potlights*
- M6** *Chefs Kitchen*
 - Stacked upper cabinets (12 inch over 36 inch) with cabinet riser extending to ceiling throughout kitchen
 - Larger kitchen island with wine rack, open shelves and additional storage
 - Gas Cooktop
 - Additional pots and pans drawers below cooktop
 - Pull-out recycle drawer
 - Under-cabinet lighting
 - Pot Filler
 - Built-in microwave and wall oven in cabinet tower with trim kit
- M7** *French Door to Pantry*
- R1** *Railing Upgrade 1*
 - Railing added to main floor leading to second floor
- S1** *Re-Circulating Pump and Line to Ensuite Shower*
- S2** *Counter Overtop of Washer and Dryer*
- S3** *Double Sink to Ensuite*
- S4** *Bonus Room Potlights*
- S5** *Wall Rainhead and Hand Shower on Slide Bar to Ensuite*
- B1** *Sleeve for Future Rear Yard Irrigation*
- B2** *Basement Suite Rough-in*
 - Concrete stairwell with 36 inch entry door
 - Rough-in plumbing for sinks, toilet, tub, and laundry
 - Electrical supplied to sub-panel for future connection
 - Additional required parking stall in tandem on driveway. Additional parking options available
 - Ceiling heights will vary due to on-site conditions

Dimensions and square footage shown may vary. Rendering shown is for illustration purposes only and should not be relied upon to accurately represent the final product. GableCraft Homes reserves the right to make modifications or substitutions without notice. E&O.E.